

# The SALINGER



1731 SQ.FT.



3-5 BEDROOMS



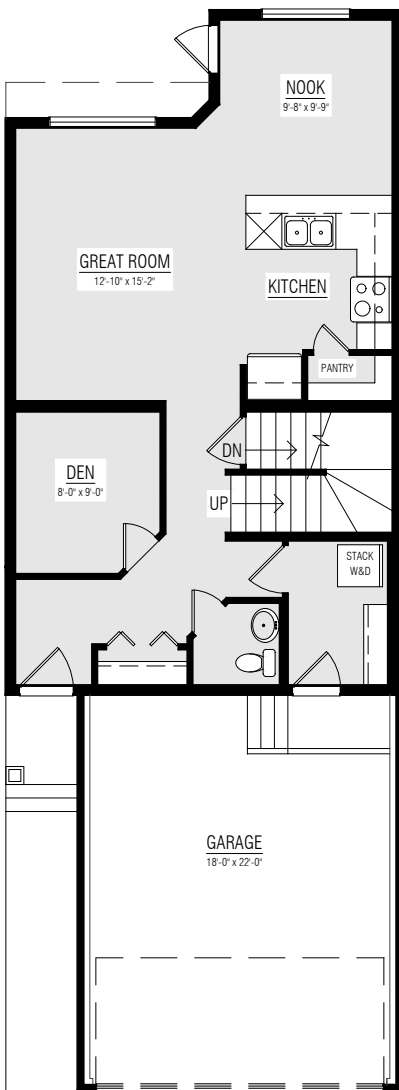
2.5 BATHROOMS

22'

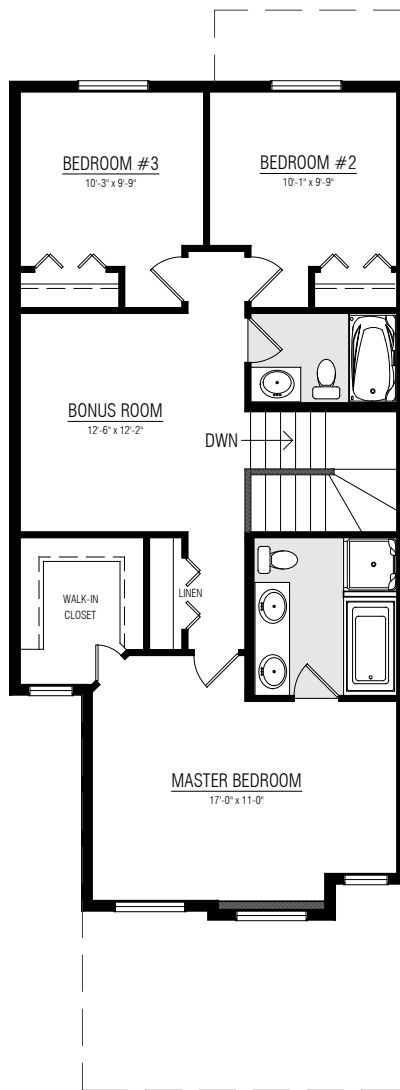


PRAIRIE

## MAIN FLOOR 769 SQ.FT.



## UPPER FLOOR 962 SQ.FT.



## OTHER ELEVATIONS

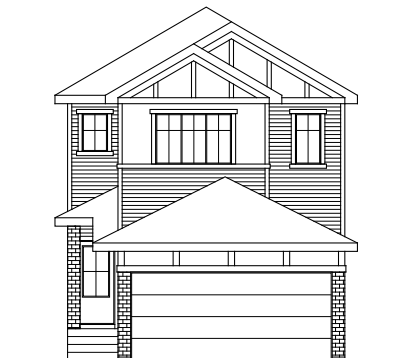
CRAFTSMAN



TRADITIONAL FARMHOUSE - SECORD



TUDOR - SECORD



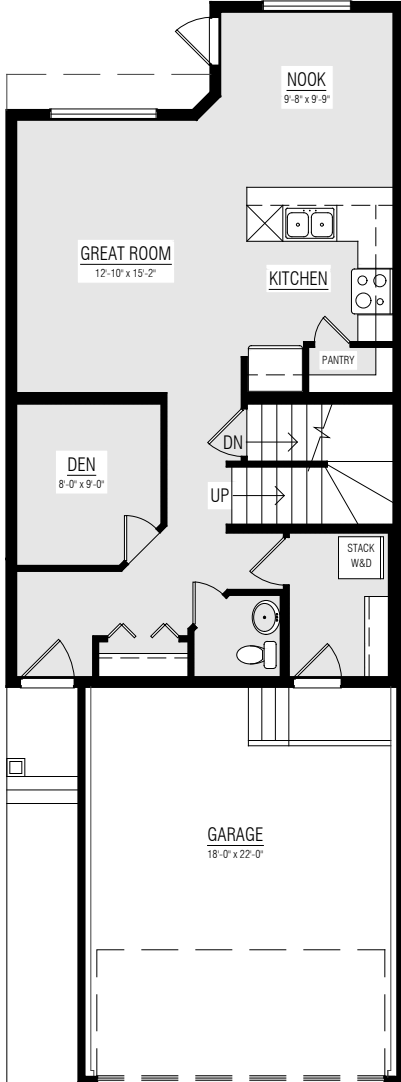
**LINCOLNBERG**  
MASTER BUILDER



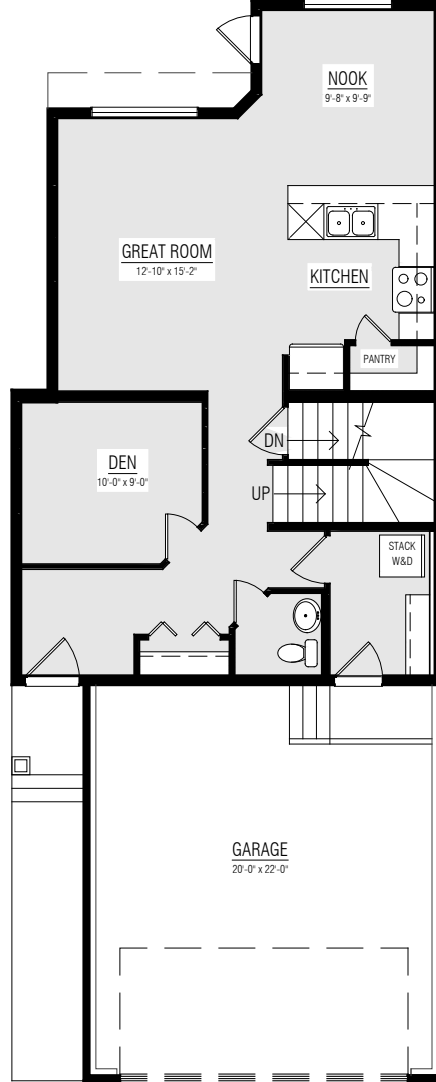
Copyright © Lincolnberg Master Builder, 2020. Revised September 16, 2021 3:52 PM. This plan is the property of Lincolnberg Master Builder. Floorplans, specifications and dimensions shown are approximate, and are subject to change without notice. All rights reserved, including the right to reproduction in whole or in part. Rendering(s) are artist concept only. E. & O.E.

# SALINGER OPTIONS

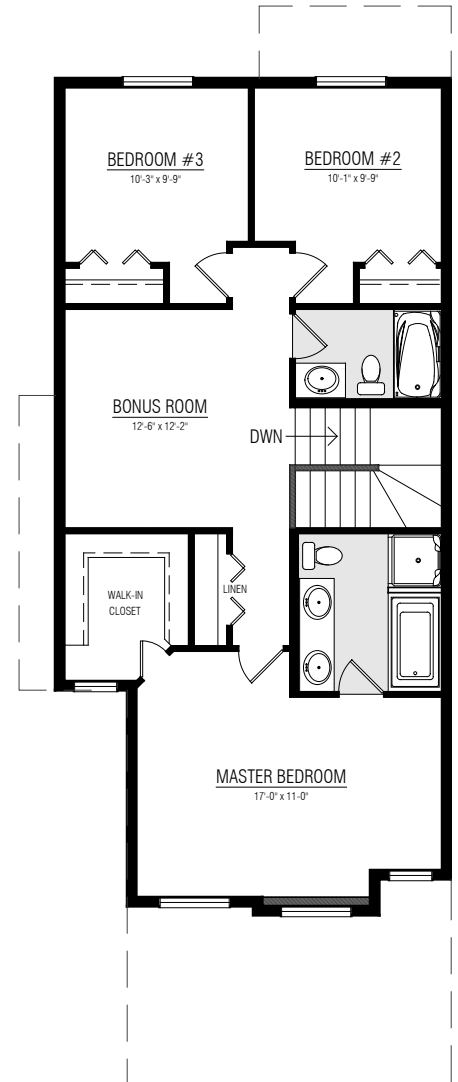
**MAIN FLOOR  
STANDARD**  
769 SQ. FT



**MAIN FLOOR  
24' WIDE OPTION**  
LARGER GARAGE - 802 SQ. FT



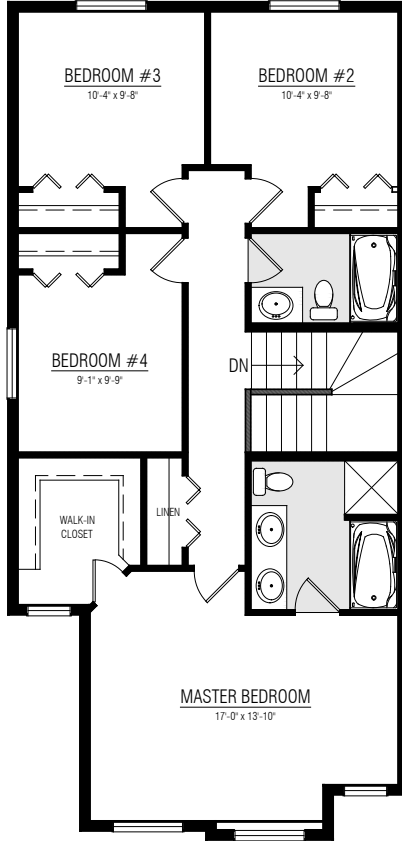
**UPPER FLOOR  
24' WIDE OPTION**  
962 SQ. FT



# SALINGER OPTIONS

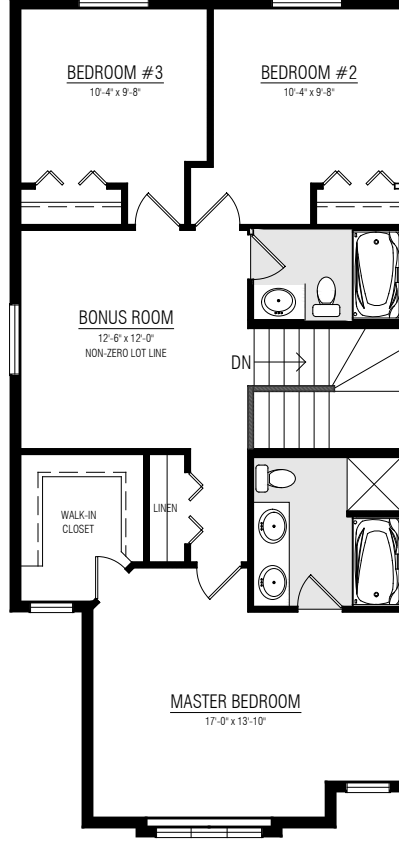
## UPPER FLOOR OPTION

4 BEDROOMS - 962 SQ. FT.



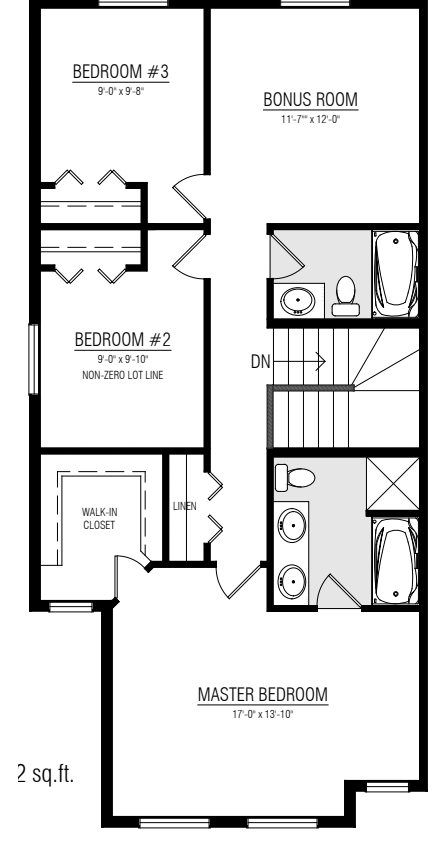
## UPPER FLOOR OPTION

MID BONUS ROOM - 962 SQ. FT.



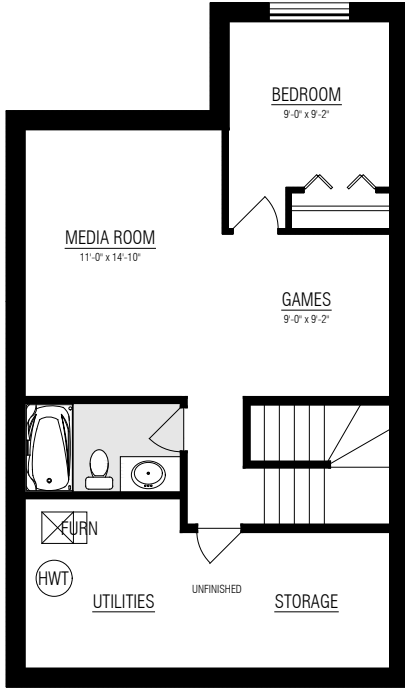
## UPPER FLOOR OPTION

REAR BONUS ROOM - 962 SQ. FT.

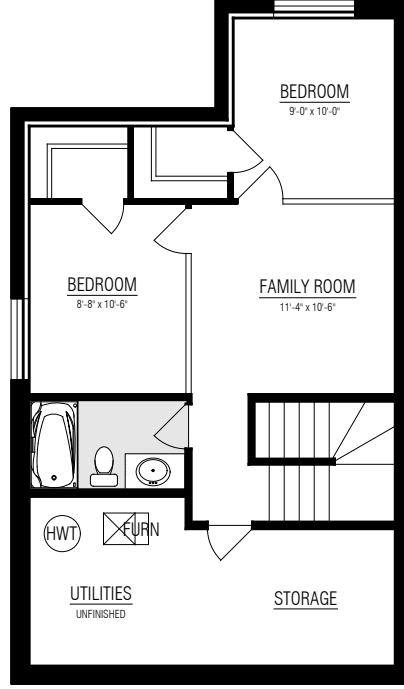


# SALINGER OPTIONS

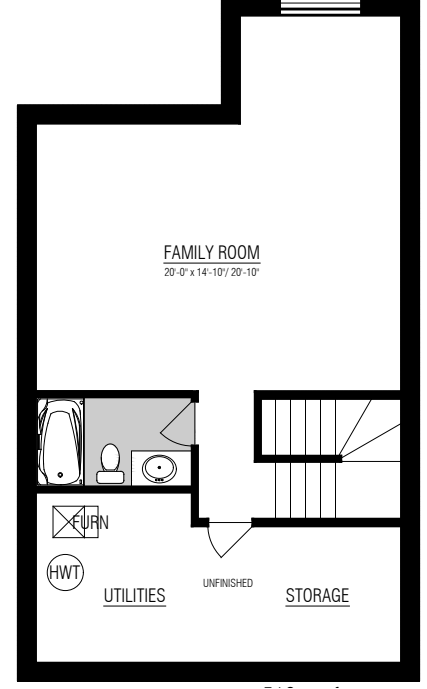
**BASEMENT DEVELOPMENT**  
OPTION #1 - 518 SQ. FT



**BASEMENT DEVELOPMENT**  
OPTION #2 - 518 SQ. FT



**BASEMENT DEVELOPMENT**  
OPTION #3 - 518 SQ. FT



**4TH BEDROOM & ISLAND IN KITCHEN**

